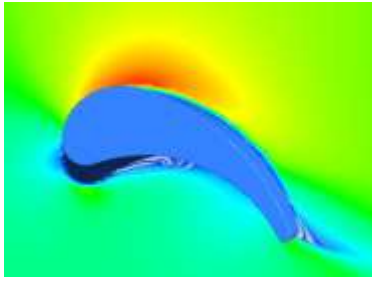


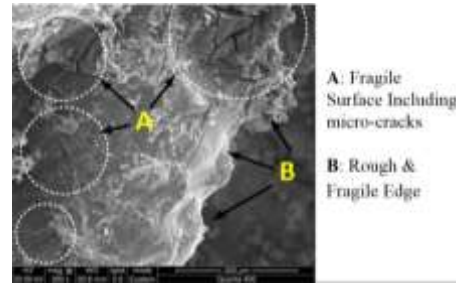
## ***Aerial Structural Laboratory (ASL)***



**Fluid solid Intraction (FSI)**



**Wind Turbine**



**Micromechanics of Damage**

The Aerial Structural Laboratory (ASL) at [SAHAND UNIVERSITY OF TECHNOLOGY \(SUT\)](#) is composed of a dedicated team of researchers and faculty members specializing in various aspects of aerial Structures specially following topics:

- Multi-scale Damage and Fracture in Aerial Composites
- Wind Turbine Blade
- Damage and Fracture Detection (Using ML and DL and Image Process)
- Damage and Fracture Modeling
- Structural Health Monitoring (SHM)

### ***Members of the Aerial Structural Laboratory (ASL)***

Head of Laboratory:



**Dr. Nabi Mehri Khansari**  
(Head of Aerial Structural Laboratory)

### **Students**



Mohammad Ebadi (MSc)

Salar Zare (MSc)



Seyyed Aref Mousavi (MSc)



Masumeh Hajebi (MSc Student)



Mahdi Sepehri (MSc Student)



Ali Mehriamiz (MSc Student)



Amin Moghtader Ahar (MSc Student)



Masumeh Abbasi (MSc Student)



Mahdi Peyravi (MSc Student)



AhAD Nezhadvali (Ph.D. Student)